

# SCANIA



DISTRIBUTION

# BODYBUILDING MADE EASIER!

Tailormade for your application with best preparations available.



## Distribution

### Truck specification

Chassi: P 320 B4x2NB

Cab: CP17N

#### Cable harnesses in cab roof FPC3024

Extra harnesses for bodybuilder installed in cab roof.

#### Instrument panel control lights BB FPC3888

There are many options for the bodywork to provide the driver with information, 8 lamps, sound and display messages in the instrument cluster. The lamps can indicate with different colours

#### Bodybuilder tube across IP C\*

All trucks are supplied with an empty tube inside the instrument panel, dedicated for the bodybuilder.

#### Preparation working lamp side below cab FPC4742

Preparation for work lights aimed backwards on the left and right-hand sides below the cab. Controlled with a switch on the door panel.

#### 3x7 poles BB cables (in cab storage RHS) FPC3023

Three 7-pin extension cable. 3 different lengths; 2m, 8m or 12m.

#### 3x7 pole electrical preparation from cab FPC2411

Pre-routed cable harness from the bodywork's central electric unit that is terminated with a DIN connector on the frame under the cab. 1, 2 or 3 pieces with 7 poles in each (contains different types of 1,5mm<sup>2</sup>, 2,5mm<sup>2</sup> and CAN cables).

#### Chassis side cover SUP FPC6561

Two different execution available, beam or shirt

#### Storage box FPC555

#### Body work holes in frame, pre punched top row FPC 7432

Frame prepared with an upper row of holes. The holes are spaced at 50 millimetres and are used to attach the bodywork to the frame of the truck.

#### Working lamp frame end, left-hand and right-hand side FPC4743

Work light at rear end of frame, on left and right-hand side. Controlled with a switch on the door panel.

#### End beam FPC4341

Vehicles that do not have drawbeam, tow beam or any other type of crossmember mounted at the rear of the frame must be fitted with an end beam.

### \*Always on truck

**I-Pad holder FPC6311**

Although designed as tablet holder, it has been proven as a holder for body builder control units.

**Air supply inside frame A\***

A dedicated outlet for BB needs of air is included on every chassis. This is the one and only place allowed to connect air supply to bodywork.

**BB brackets (flexible/with holes/for welding) FPC3302, FPC3303**

Scania can offer many different body attachment brackets to suit a variety of applications. The bodywork is bolted into the upper row of holes on the bracket.

**Mudguards rear axles FPC164**

Mudguards made of hard plastic designed for the rear axle/axles.

**Rear overhang in 10mm steps FPC1537**

Scania can deliver a perfect adapted overhang to every bodywork within 10 mm steps.

**Tail lift FPC3966**

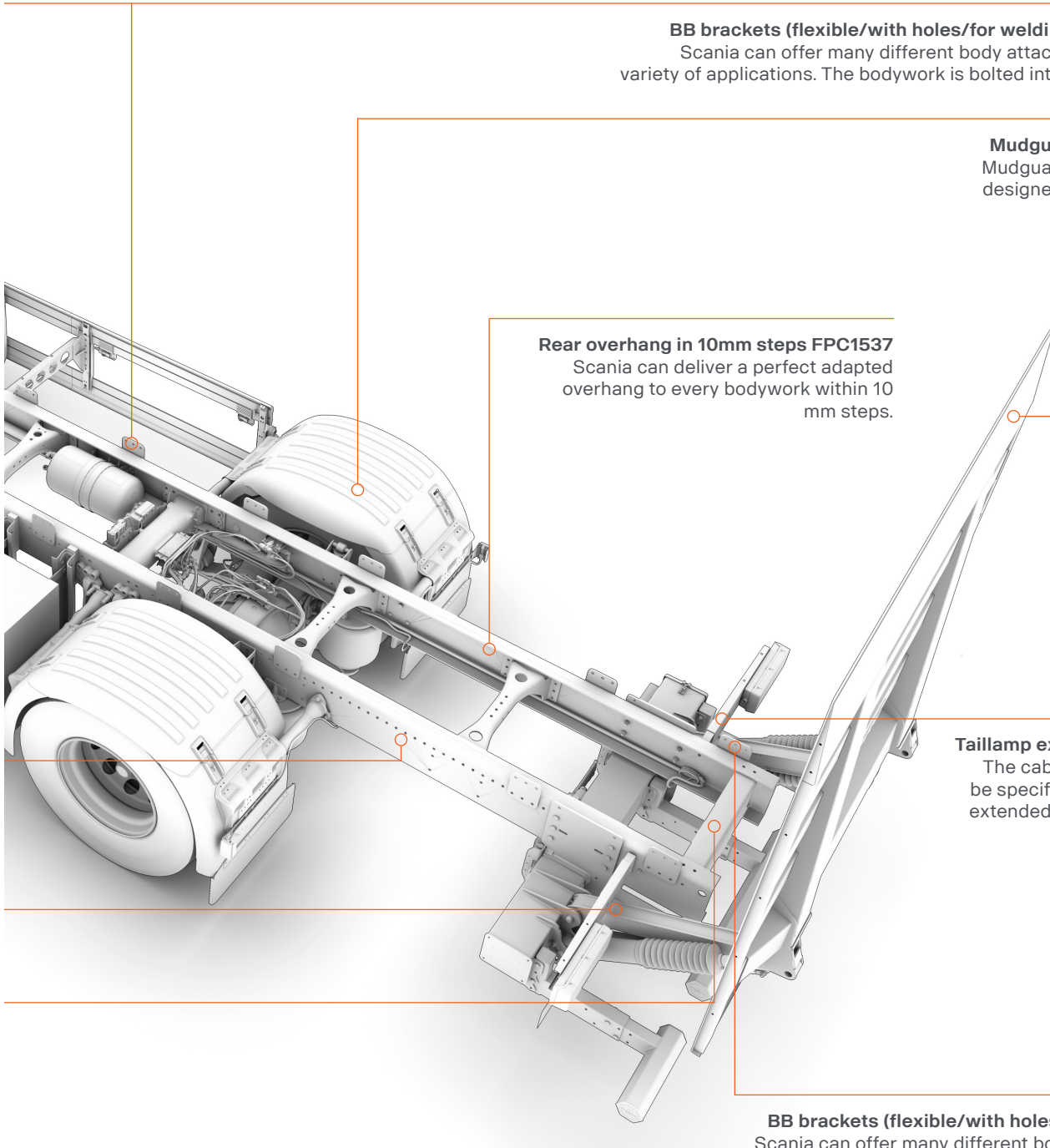
Taillift mounted at factory. If it's needed to be done locally, a electrical preparation can be chosen.

**Taillamp extended cable FPC1533**

The cables to the rear lights can be specified in standard length or extended by 600 mm or 1200 mm

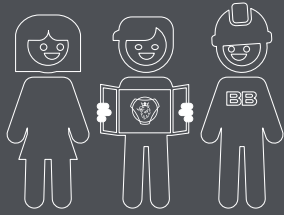
**BB brackets (flexible/with holes/for welding) FPC3412**

Scania can offer many different body attachment brackets to suit a variety of applications. The bodywork is bolted into the upper row of holes on the bracket.



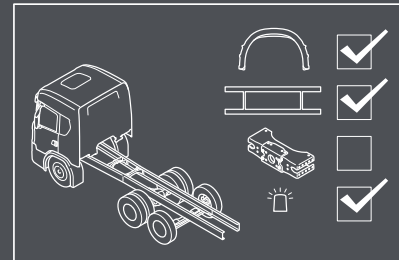
# The bodybuilding process

“Together we can make the best trucks in the world”



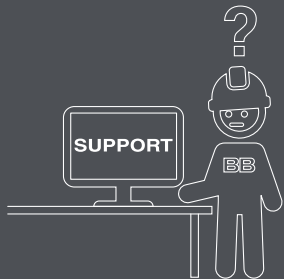
1

The bodybuilding process is a shared process. By involving all stakeholders from the beginning, we secure quality, reduce lead time and eliminate waste.



2

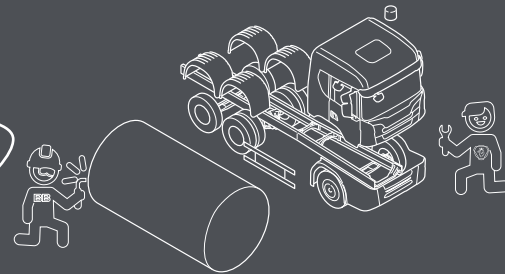
The early stage is very important. Here we make sure the chassis is equipped with the right preparations and has an optimized bodywork interface.



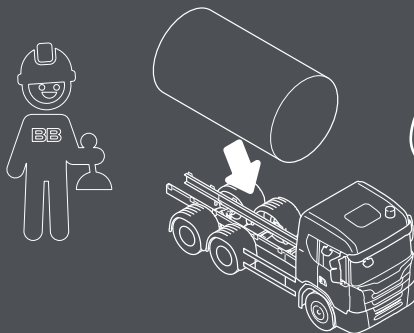
3

Whenever information is required, Scania truck bodybuilder portal has everything you need.

4



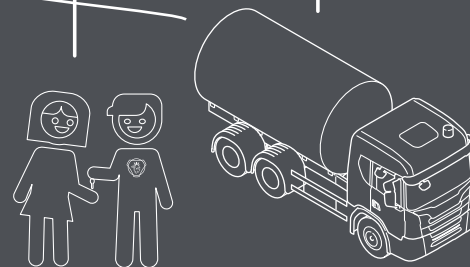
With good planning the chassis and bodywork can be produced in parallel to shorten lead time in the build process.



5

When the chassis arrives at the bodybuilder, fitting the bodywork is just plug and play.

FINISH



This process ensures that we deliver the highest quality, on time, at the right cost. And the customer will take delivery of the best truck in the world.

## Scania CV AB

SE 151 87 Södertälje, Sweden  
Telephone +46 8 553 810 00  
mail@scania.com  
www.scania.com

[www.truckbodybuilder.scania.com](http://www.truckbodybuilder.scania.com)