

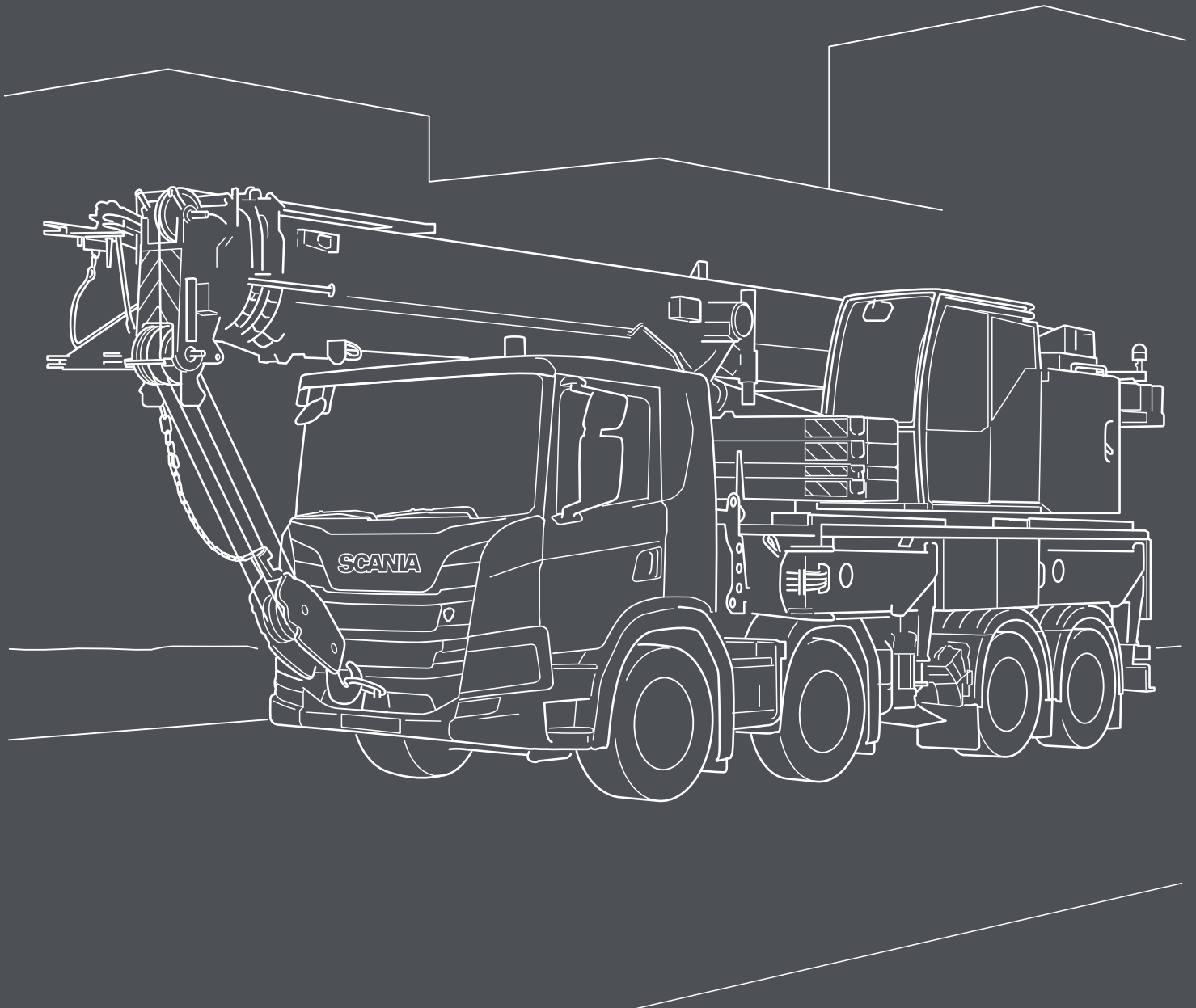
# SCANIA



MOBILE CRANE

# BODYBUILDING MADE EASIER!

Tailormade for your application with best preparations available.



Truck specification

Chassi: P 410 B8x4NZ  
Cab: CP 17L

**Remote controlled engine start FPC3313**  
Preparation for engine start (need BCI)

**Bodybuilder tube across IP C\***  
All trucks are supplied with an empty tube inside the instument panel, dedicated for the bodybuilder.

**Tipper control lever (air) FPC4666**  
Control lever in the cab for activating the hydraulic valve that raises or lowers the tipper body on the truck.

**Headlight protection FPC2021**  
The headlights are protected by a steel grille.

**Engine hour meter FPC1356**  
The engine hour meter register the total operating hours of the engine.

**Instrument panel control lights BB FPC3888**  
There are many options for the bodywork to provide the driver with information, 8 lamps, sound and display messages in the instrument cluster. The lamps can indicate with different colours.

**CAN switches FPC6793**  
Spaces in the instrument panel are reserved for extra switches that are programmed in the BCI control unit.

**Extension module FPC4901**  
An extra panel with space for extra switch attached to the instrument panel.

**3x7 poles BB cables (in cab storage RHS) FPC3023**  
Three 7-pin extension cable. 3 different lenghts; 2m, 8m or 12m.

**3x7 pole electrical preparation from cab FPC2411**  
Pre-routed cable harness from the bodywork's central electric unit that is terminated with a DIN connector on the frame nuder the cab. 1, 2 or 3 pieces with 7 poles in each (containes different types of 1,5mm2, 2,5mm2 and CAN cables).

**BB electrical supply 150A continually, 250A max B\***  
All trucks are supplied with a dedicated electrical output, conviniently located behind the mudguard of the 1st front axle.

**Lowered shock absorber position 2nd front axle D\***  
With the new design, Bodybuilder have much more clearance in this area.

**Roof rails FPC1401**  
The roof rails are in aluminium which simplifies the fitting of an air deflector, roof rack and other extra equipment.

**Beacon FPC1330**  
Mounted on a robust aluminium bar, the rotating beacon supplies efficient warning light.

**Working lamps rear wall cab top FPC5900**  
The work light consists of two LED headlamps fitted on the left and right-hand sides of the rear cab wall.

**Preparation working lamp side below cab FPC4742**  
Preparation for work lights aimed backwards on the left and right-hand sides below the cab. Controlled with a switch on the door panel.

**Hydraulic pump FPC4801**  
With hydraulic pump for bodywork. Pump type and pump volume can be selected fit different needs/applications.

**BCI Bodywork communication interface FPC5837**  
BCI is a programmable interface between the truck and bodywork facilitating communications between truck and bodywork. The BCI can be programmed with advanced logics for safety and other operational funtionality in the bodywork.

**EG PTO preparation FPC3502**  
The electric preparation includes routed wiring for activation of an EG power take-off .

**EG PTO clutch dependant power take-off FPC6392**  
With EG PTO, the power take-off can only be used when the clutch pedal is released.

**Mudguards 2nd front axle FPC4050**  
The mudguard on the second front axle is height-adjustable. It is supplied from the factory in the highest position, but can be easily adjusted to three different positions to fit with the bodywork and tyres.

**BB brackets (flexible/with holes/for welding) FPC3302, FPC3303**  
Scania can offer many different body attachment brackets to suit a variety of applications. The bodywork is bolted into the upper row of holes on the bracket.

**Mudguards rear axles FPC164**  
Mudguards made of hard plastic designed for the rear axle/axes.

**Rear overhang in 10mm steps FPC1537**  
Scania can deliver a perfect adapted overhang to every bodywork within 10 mm steps.

**BB brackets (flexible/with holes/for welding) FPC3412**  
Scania can offer many different body attachment brackets to suit a variety of applications. The bodywork is bolted into the upper row of holes on the bracket.

**Tail lamp protection FPC4754**  
The robust rear light protection is suitable for trucks operating in tough conditions.

**BB brackets (flexible/with holes/for welding) FPC3412**  
Scania can offer many different body attachment brackets to suit a variety of applications. The bodywork is bolted into the upper row of holes on the bracket.

**End beam FPC4341**  
Vehicles that do not have drawbeam, tow beam or any other type of crossmember mounted at the rear of the frame must be fitted with an end beam.

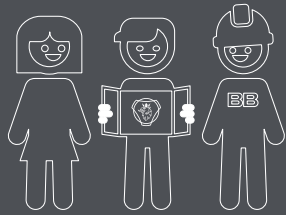
**Side marker lights FPC313**  
Different numbers of lamps are supplied depending on the length of the vehicle. These are available temporarily or permanently mounted.

**Rear underrun protection RUP FPC1539**  
Rear underrun protection available in 3 different styles/executions.

\*Always on truck

# The bodybuilding process

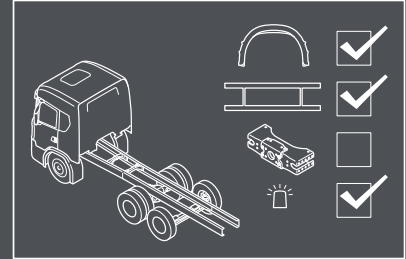
"Together we can make the best trucks in the world"



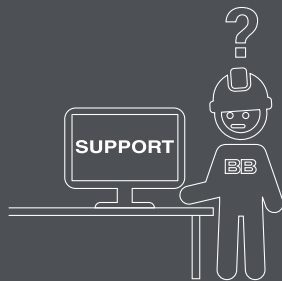
The bodybuilding process is a shared process. By involving all stakeholders from the beginning, we secure quality, reduce lead time and eliminate waste.

1

2



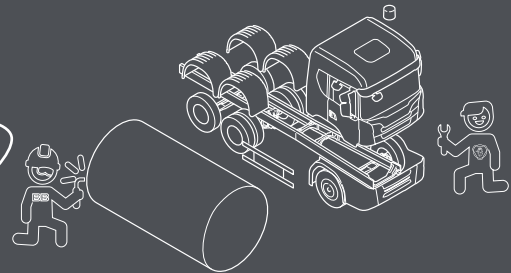
The early stage is very important. Here we make sure the chassis is equipped with the right preparations and has an optimized bodywork interface.



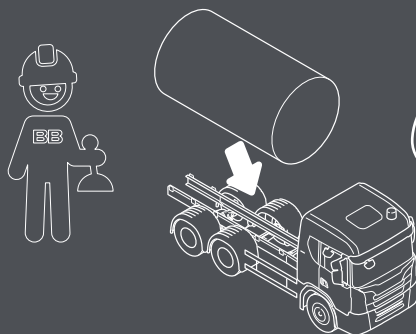
Whenever information is required, Scania truck bodybuilder portal has everything you need.

3

4

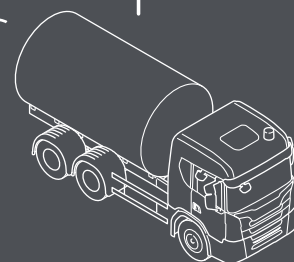
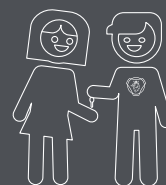


With good planning the chassis and bodywork can be produced in parallel to shorten lead time in the build process.



When the chassis arrives at the bodybuilder, fitting the bodywork is just plug and play.

5



This process ensures that we deliver the highest quality, on time, at the right cost. And the customer will take delivery of the best truck in the world.

## Scania CV AB

SE 151 87 Södertälje, Sweden  
Telephone +46 8 553 810 00  
mail@scania.com  
www.scania.com

[www.truckbodybuilder.scania.com](http://www.truckbodybuilder.scania.com)