

<https://truckbodybuilder.scania.com>

July 3, 2025

Below you will find the latest information that is important to know when bodybuilding on a Scania vehicle.

For Scania contact in bodybuilding issues, see:

<https://bodybuilder.scania.com/trucks/en/help/market-contacts.html>

## FUEL FILTER CHASSIS MOUNTED & RELOCATION KIT

**Fuel Filter Chassis-Mounted (FPC1964J)**, is now available for rigid truck configurations equipped with a single fuel tank. This solution, also known as the Basic Fuel Treatment Unit (BFTU), includes a fuel filter, venturi, fuel pipes, and electrical wiring.

**Customers can choose either BFTU or the Fuel Optimization Unit (FPC8385A, FOU) while specifying the chassis with Super driveline.**

The installation location of BFTU depends on the cab length: for cab lengths of 17 dm and 20 dm, the BFTU is mounted behind the cab on the cab bracket while for cab lengths of 28 dm and 31 dm, it is mounted on the chassis frame.

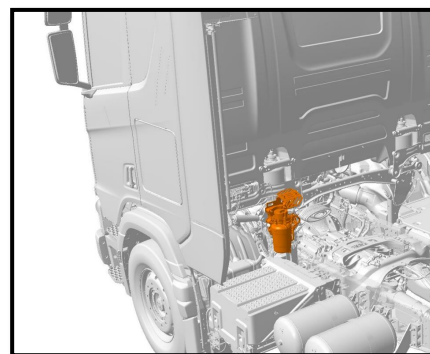
Compared to the Fuel Optimization Unit, BFTU offers a more compact solution that increases the available frame space which providing better flexibility for bodybuilders, while FOU enables full utilisation of tank's capacity, reducing the tank's dead weight.

To resolve potential space conflicts between the BFTU and body installations, a new variant, **FPC11520A – Fuel Filter Chassis-Mounted Relocation Kit**, is also introduced. This kit enables to relocate BFTU to an alternative position if required.

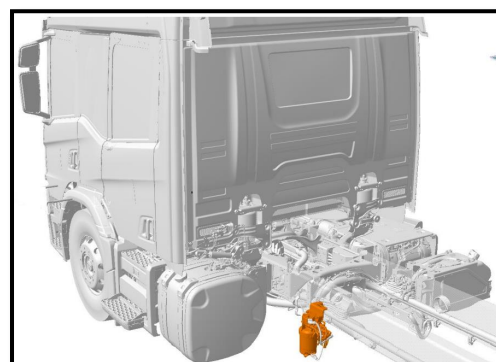
Vehicles equipped with FPC11520A from factory are delivered with fuel pipes and electrical extension cables packed in a plastic bag and stored in an external cab compartment. All components are clearly labelled with part numbers to support accurate and efficient installation. The relocation kit is also available as a spare part.

The relevant bodybuilder manual, "*Working with the Fuel System*" will soon be published on the Truck Bodybuilder Portal with instructions how to relocate BFTU. Please refer to the instruction headline for the latest update date.

Link to the bodybuilder manual: [Vehicle components and systems/Fuel system/Working with the fuel system](#)



**BFTU behind cab, cab length 17/20 dm**

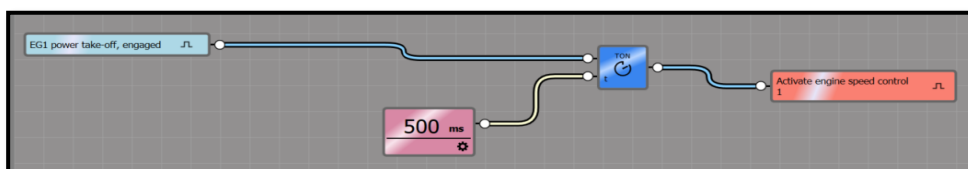


**BFTU on frame, cab length 28/31 dm**

## EC PTO SPEED CONTROL WITH CRUISE CONTROL BUTTON

For battery electric vehicles equipped with electric drivelines EM C1-2 or EM C1-4 and EC PTO (FPC9011A), chassis produced after May 2, 2025 now support PTO speed control via the cruise control button on the steering wheel. This functionality is enabled through BICT logic using *Engine Speed Control Module 1* in Scania Bodywork Communication Interface, BCI.

For chassis produced before this date, bodybuilders can configure the same functionality by programming the PTO speed control in BICT. This involves adjusting parameter settings in SWS and changing the Engine Speed Control Type to *Cruise Control button*.





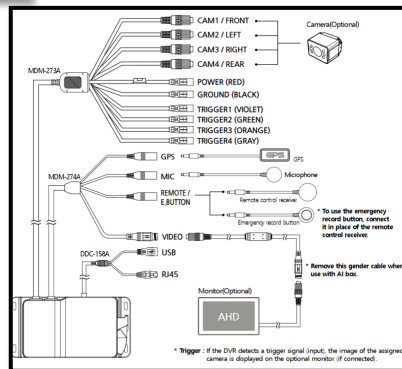
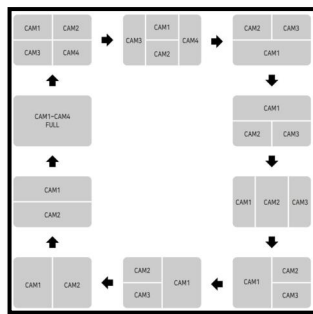
## MDVR CAMERA MULTIBOX WITH DIGITAL VIDEO RECORDER FOR SCANIA SMART DASH



MDVR (Multibox Digital Video Recorder) is introduced in Scania Accessories designed for the AHD-signal environment used with the Scania Smart Dash. This unit enables high-quality video capture from up to four Smart Dash cameras simultaneously, enhancing vehicle safety, security, and post-event analysis.

The MDVR records directly to a lockable SD card or an SSD hard drive, and supports full analogue HD video output

to the Smart Dash Digital Driver Unit (DDU). A split signal cable included in the kit allows camera feeds to be sent both to the MDVR and a display monitor of the bodybuilders choice for real-time viewing. With features like full/2-way/3-way/4-split screen views, 30fps recording.



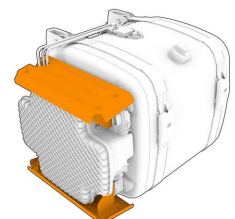
It can operate in harsh environments with an IP69K waterproof rating and a wide temperature range of -20°C to 70°C. The unit is also ADR compliant. Part Number: 3165665. Required Adapter part number for DDU Camera Port: 3203561 or 3186731

Link to Accessories Page: <https://accessories.scania.com/en/catalog/VA6/Safety---Security/Camera-systems-for-smart-dash/Smart-dash-Cameras/3165665-MDVR-AHD-4CH>

## PROTECTION COVER FOR FUEL OPTIMIZATION UNIT (FOU)

The Fuel Optimization Unit (FPC8385A, FOU) mounted on the Steel Fuel Tank (FPC00235D) is always equipped with both upper and lower steel protection covers. These covers are designed to safeguard the unit in harsh environments, particularly for demanding off-road applications such as tipper trucks.

It is also possible to request the FOU as a standalone unit via a Special Order for both Steel or Aluminium Fuel Tank (FPC00235C). In such cases, the FOU is delivered in a dedicated steel box that provides protection against external impacts and environmental conditions. This ensures that the plastic casing of the FOU remains shielded from potential damage caused by particles encountered in the operations.



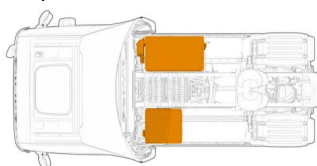
**FOU protection cover with steel fuel tank**



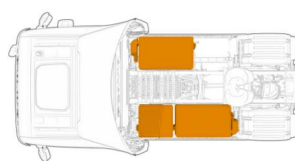
**Standalone FOU**

## MORE CONFIGURATION AND NEW BATTERY CAPACITY OPTIONS IN SCANIA BATTERY ELECTRIC VEHICLE, BEV

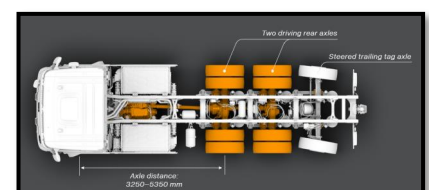
Chassis configuration, 8x4\*4, is now available for battery electric vehicles, supporting different axle distances to meet different operational requirements. In addition, it is now possible to select from a wider range of battery capacity options which can provide increased flexibility by freeing up space along the chassis, allowing bodybuilders to utilize that space for custom installations tailored to specific application needs.



**Propulsion Battery Capacity 267kWh**



**Propulsion Battery Capacity 446kWh**



**BEV powertrain 8x4\*4**