

Below you will find the latest information that is important to know when bodybuilding on a Scania vehicle.

For Scania contact in bodybuilding issues, see:

<https://bodybuilder.scania.com/trucks/en/help/market-contacts.html>

NEW 11-LITRE ENGINE PLATFORM IN SCANIA SUPER RANGE

Scania introduces a new 11-litre engine platform as part of the Super range, featuring three new Euro 6 engines: 350 hp, 390 hp, and 430 hp. The inline five-cylinder diesel platform offers improved efficiency in a more lightweight package. The new 11-litre engine platform uses the same engine PTO (ED) program as the previously introduced for six-cylinder 13-litre engines in the Super range. The available PTO variants are ED10R WBP1, ED10R WBF4, and ED7R WBF3. Detailed information and specifications are available in the Scania Bodybuilder Portal.

The maximum permitted moment of inertia for equipment connected to the PTO differs between the new five-cylinder engine and the earlier six-cylinder engines.

If the ED PTO with directly-mounted pump connection ED10R WBP1 (*illustration 1*) is used, the maximum moment of inertia for the bodybuilder equipment must comply with the specified value stated below.

11-litre, 5-cylinders	0.095 kgm ²
13-litre, 6-cylinders	0.070 kgm ²

If PTO variants with flange connection ED10R WBF4 or ED7R WBF3 are used together with a propeller shaft to connect bodybuilder equipment to the PTO (*illustration 2*), the instructions in the Bodybuilder Manual "*Propeller shafts for power take-off*" must be followed. A diagram shows area (A) with permissible limits for combined moment of inertia and propeller shaft rigidity. **If the values fall outside the permissible area, an elastic coupling must be installed** which

needs to be selected through a dynamic calculation according to the engine characteristics listed in the Bodybuilder Manual. Elastic coupling is currently not available for order from Scania, as its specifications are unique to each specific installation.

Link to Bodybuilder manual: [Power take-offs and hydraulics/Power take-off/Propeller shafts for power take-offs](#)

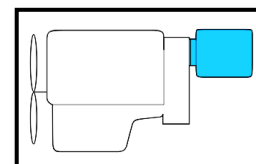


Illustration 1

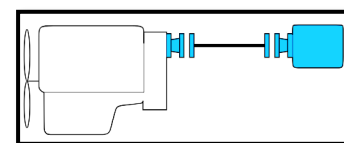
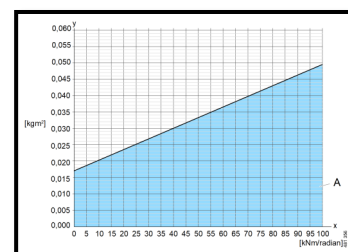


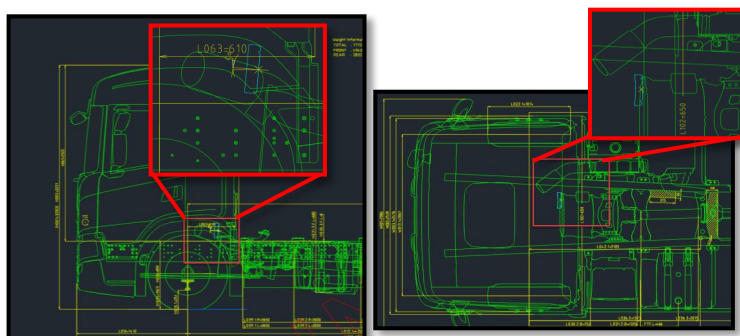
Illustration 2



x: Propeller shaft rigidity

y: Inertia (Auxiliary Unit + 0.5 × propeller shaft)

ED ENGINE PTO ON INDIVIDUAL CHASSIS DRAWING, ICD



It is now possible to navigate the ED engine PTO on the individual chassis drawing, ICD, with dimensions provided according to each ED PTO type as stated in the specific PTO data sheets. This update is valid for all engine PTO types for chassis configured or produced after January 1, 2025.



CAMERA MULTIBOX – VERSATILE 4-CAMERA SPLITTER VIEWS IN CID

The Multibox AHD 4CH is a 4-channel analogue HD video splitter designed for integration with the Smart Dash system, now available through Scania Accessories.

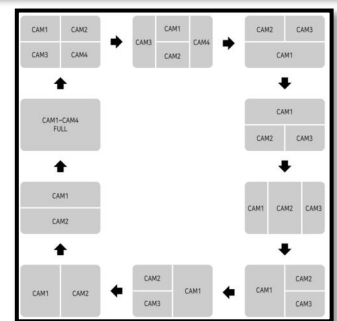
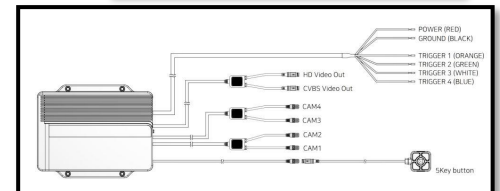
This device allows simultaneous connection of up to **four** AHD cameras, supporting both 720P and 1080P resolutions. It connects to the Digital Driver Control Unit (DDU) via the analogue camera port and displays video on the Central Information Display (CID).

Multiple viewing modes are supported, including full screen, dual, triple, and quad view. It also features mirror image functionality to improve visibility and assist with manoeuvring.

A 5-key remote control is included for manual switching between camera views.

Built for demanding environments, the unit has an IP69K rating, operates within a temperature range of -20°C to +70°C, and complies with vibration and ADR standards.

The Multibox AHD 4CH is available through Scania accessory channels with part number 3254841 and can be installed as a retrofit solution. For more details, visit <https://accessories.scania.com/>



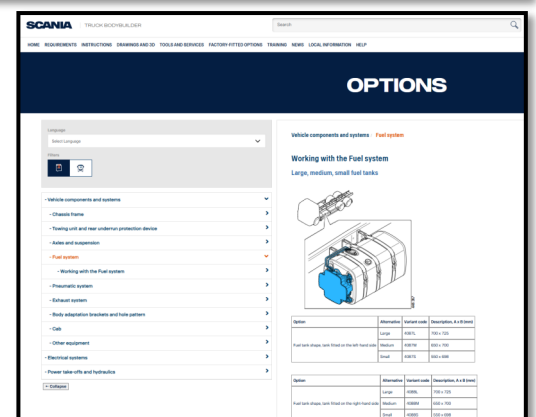
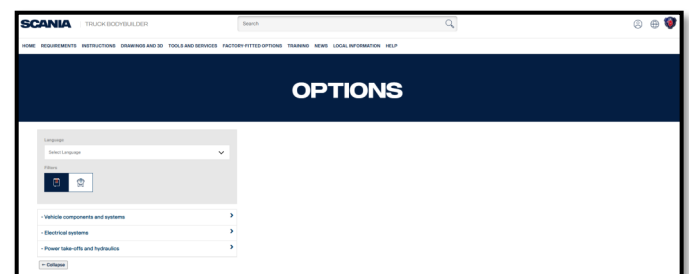
FACTORY-FITTED OPTIONS FEATURE IN SCANIA TRUCK BODYBUILDER PORTAL

The factory-fitted option feature in the Scania Truck Bodybuilder Portal assists bodybuilders in identifying available options by providing detailed information for each specific variant.

It offers an organized overview of all variant codes related to bodybuilding features, grouped into clearly defined sections with subheadings. Each subheading includes direct links to the relevant Bodybuilder Manual, where users can access additional specifications and details about each variant code.

This improvement simplifies the process of accessing information, helping bodybuilders manage their time more efficiently and optimize resource utilization during the bodybuilding process.

The feature is especially valuable for users of CAVA for Bodybuilders, as it enables easier access to detailed information about each option.



Please note that the current search function does not return links to the factory-fitted option page when searching by specific keyword or variant code. Instead, the results are reflecting appropriate content within the Bodybuilder Instruction Manual hence that is where the actual source for information is taken.

Link to the page: [Factory-fitted options / Options](#)