



Below you will find the latest information that is important to know when bodybuilding on a Scania vehicle.

For Scania contact in bodybuilding issues, see:

<https://bodybuilder.scania.com/trucks/en/help/market-contacts.html>

360° 3D/2D AREA VIEW CAMERA IN SMART DASH

Scania is introducing an updated 360° Area View Camera System for chassis with Electrical System Generation 7 (FPC9742B), available with **FPC9026A (with external monitor) or as spare part number 3264979 (without external monitor)**. The system is designed to give the driver a better overview around the vehicle and support safer manoeuvring in demanding environments such as urban traffic, distribution, construction sites, and tight loading areas.

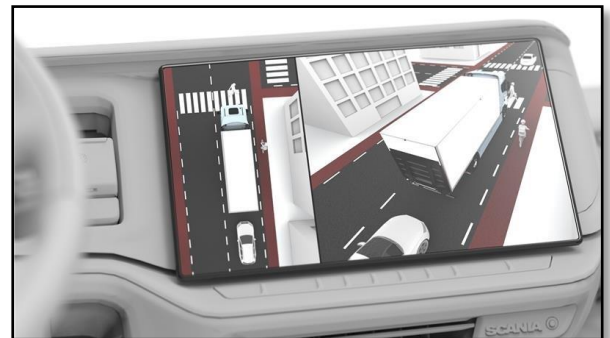
The system can show a 3D view directly in the Central Information Display (CID) and can also use the GSR rear camera as part of the camera setup. For applications requiring a larger display, a 10-inch monitor can be added. Depending on the driving situation and programming, the system can automatically show relevant views, such as a top view around the truck, a rear view when reversing, split-screen views, or side views when the left or right indicator is activated.

FPC9026A (with external monitor) will come with all parts needed to remove the monitor and route the video out to Digital Driver Interaction Control Unit (DDU) if customer wants the system displayed in the CID instead.

Object detection **part number 3268393** can also be connected to the Scania camera system. The function is pre-set to detect pedestrians and cyclists, and it can be programmed to detect other objects such as cars and buses. This gives the driver additional support in situations where vulnerable road users or other vehicles may be close to the truck.

For customers who need recording functionality, the system can be combined with a DVR box to record camera views. For recording, **MDVR 4 channel part number 3156665** is used. If all camera channels should be recorded, **4 pieces adaptor part number 3293779 are needed**. If the GSR camera is used in the 360 system, the required adaptors are **3 pieces adaptor part number 3293779** and **1 piece with part number 3293792**.

Link to Bodybuilder Manual: [Electrical systems / Function descriptions with connection instructions / Camera](#)



1. Hazard



2D Top

2. Reverse



2D Top + 2D Rear

3. Left indicator lamp



2D Mode 2D Top + 2D Left



3D Mode 2D Top + 3D Left

4. Right indicator lamp



2D Mode 2D Top + 2D Right



3D Mode 2D Top + 3D Right



CUSTOMIZED MESSAGES FOR BODYBUILDERS – CHARACTER AND SYMBOL DISPLAY LIMITATIONS

The initial release of the customized messages functionality, announced in the February 2026 newsletter, is currently affected by a few technical limitations.

Character support

Only the basic Latin alphabet is currently supported. Extended characters, such as ö, ä, and ü, are not recognized at this stage.

Symbol assignment

A deviation has been identified in the customized message feature where symbols may display incorrectly or may not be assigned successfully.

A quality investigation is ongoing to resolve these issues. At this time, no confirmed timeline for the resolution is available.

1. Severity level (color):

- Information (white)
- Warning (yellow)
- Alarm (red)

2. Symbol

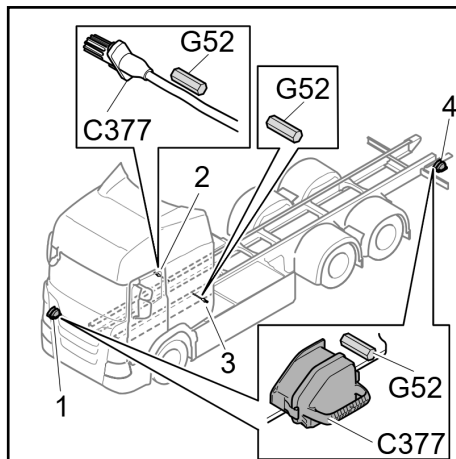
3. Function text

4. Suggested action text



Link to Bodybuilder Manual: [Electrical systems /Function descriptions with connection instructions / Driver's information / Indications in Scania's digital driver environment \(DIM\)](#)

Link to February 2026 Newsletter: https://bodybuilder.scania.com/content/dam/bodybuilder/tbb-files/newsletter/BBC_Newsletter_February_2026.pdf



NEW JUMP START CONNECTOR POSITION FOR BEV CHASSIS

With the introduction of Direct Current Converter, generation 3 for Battery Electric Vehicles (FPC8889B), the jump start connectors is moved to position 2, shown in the illustration.

In position 2, both connectors are available:

- C377 — plus connector
- G52 — ground connector

For Battery Electric Vehicles equipped with Direct Current Converter, generation 2 (FPC8889A), the jump start connectors remain in position 1.

Connector positions 3 and 4 are valid for Internal Combustion Engine. This change applies to chassis produced after 2026.09.3.

Link to Bodybuilder Manual: [Electrical systems / Work on the vehicle's electrical systems](#)

