



<https://truckbodybuilder.scania.com> (log in for access)

November 30, 2023

Below you will find the latest information that is important to know when bodybuilding on a Scania vehicle.

For Scania contact in bodybuilding issues, see:

<https://bodybuilder.scania.com/trucks/en/help/market-contacts.html>

INSURANCE FOR TRANSPORT DAMAGES

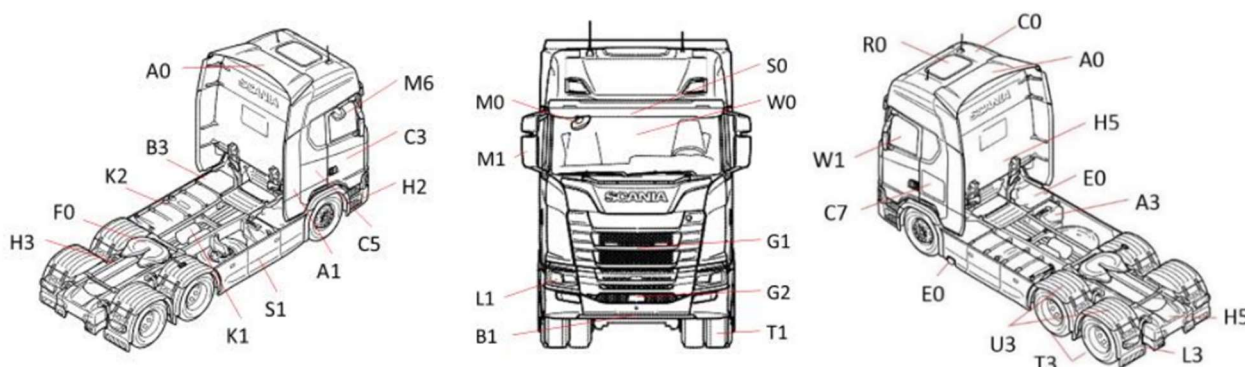
Scania CV AB has Global Transport Insurances that applies to all transports, including temporary storage, where Scania CV AB or wholly owned subsidiaries bear the transport risk (due to commercial commitments or as the owner of the goods), such as during chassis transports.

The insurance is a so-called general insurance which applies irrespective of the transport method including when the chassis is delivered on its own wheels.

Scania Global Transport Insurance is valid around the world except for those countries where there is restrictive legislation or local insurance is mandatory.

For more information, for instance the Transport Claims Manual for bodybuilders as well as the Transport damage report, see the following link:

<https://bodybuilder.scania.com/trucks/en/misc/kc.html/?app=docnav&id=S0000069001&type=section>



When transport-related damage is discovered, the damage shall be reported to the haulier and to Scania's insurance company.

For Scania to be able to process a claim, all damage and missing parts must be noted and signed for on each page of the bill of lading (CMR). If this is not done correctly, the receiver will be liable for all costs attributable to the damage or missing parts.

Carefully read the Transport Claims Manual for bodybuilders and use the Scania Dealer Checklist as guidance when checking the vehicle. Then fill out the form in the document Transport damage report.



THIRD PARTY FUEL PICK-UP UNIT

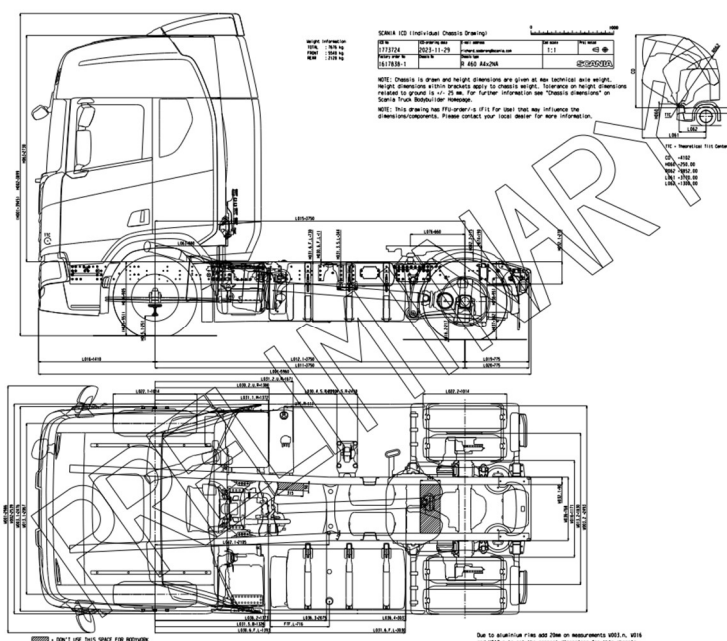
If the Scania fuel pick-up units are not compatible with the height of a 3rd party fuel tank, it is possible to get correct fuel level indications in Scania instrument cluster together with 3rd party fuel pick-up units.

Bodybuilders shall provide necessary information as below and get allowance from Scania before start of planning to install a third party fuel pick-up unit.

Make sure the following requirements are fulfilled before contacting Scania for further information about other installation requirements as well as support:

1. The 3rd party fuel pick-up unit shall contain the same functionalities as of Scania fuel pick-up unit, i.e. a feed and return fuel pipe connection as well as a breather connections.
2. The filter mesh size on the 3rd party pick-up unit shall be 200 microns.
3. The resistance range of the 3rd party pick-up unit shall be between 0-3000 Ohm.

Software rebuild and configuration of the 3rd party fuel pick-up unit shall be done by a local Scania dealer.



PRELIMINARY INDIVIDUAL CHASSIS DRAWING

When you get an Individual Chassis Drawing (ICD) with the marking "Preliminary" you must consider it as the specification is not being determined. You must be prepared that the specification of the chassis can change and therefore production of the bodywork should not be started based on the information from a preliminary drawing. Instead, the final work should be completed based on a definitive drawing without the "Preliminary" stamp.



BODYBUILDER LIGHT INDICATIONS IN THE SMART DASH

In the Scania digital driver environment there are light indications for bodywork functions prepared in the driver display. Position 1 to 8 in below picture.



On vehicle without BCI functionality (FPC 5837Z) it is possible to use two of the optional lamps with or without acoustic indications. The parameters for light indications are selected by using SDP3 for bodybuilders.

If there is a need for more than 2 lamps the vehicle has to be ordered with BCI functionality (FPC 5837A).

On vehicles with BCI functionality, there are at most 8 indicator lamps which can indicate status for the vehicle's different bodywork functions. For each indicator lamp it is possible to pre-order separate symbol showing the function of the lamp. Each indication lamp position has a corresponding order variant code (FPC) according to the following:

Position in the digital cluster	FPC
Position1	10222
Position2	10223
Position3	10224
Position4	10225
Position5	10226
Position6	10227
Position7	10228
Position8	10229

Each indication lamp can be specified with one of the following symbols and are determined by execution chosen for each position, see next page.

Activation of each lamp as well as choosing colour of the indication is managed via BICT.

It is possible to change symbol at Scania dealer or with SDP3 for bodybuilders in the bodybuilder process.



AA		symbol, bus door safety system disengaged	AS		symbol, EG1 power take-off	BK		symbol, reverse alarm off
AB		symbol, towing unit unlocked	AT		symbol, EG2 power take-off	BL		symbol, reversing light
AC		symbol, towing unit locked	AU		symbol, EG3 power take-off	BM		symbol, rotating beacon
AD		symbol, electrically heated windscreen	AV		symbol, vehicle fire warning	BN		symbol, sand spreader type 1
AE		symbol, heated windscreen wiper	AX		symbol, trailer tailboard spreader open	BP		symbol, sand spreader type 2
AF		symbol, low oil level, automatic oil filling	AY		symbol, tipper, trailer	BQ		symbol, sand spreader heater
AG		symbol, central lubrication malfunction	AZ		symbol, truck tailboard spreader open	BR		symbol, supporting leg
AH		symbol, door malfunction	BA		symbol, flashing light	BU		symbol, trailer axle lift 3
AJ		symbol, external lamp malfunction	BB		symbol, electrical wheelchair lift	BV		symbol, tipper body heating
AK		symbol, passenger signal	BC		symbol, heating of surface	BX		symbol, tipper, truck
AL		symbol, school transport sign	BD		bogie drive roller	BY		symbol, cargo area lighting
AM		symbol, emergency hammer removed	BE		symbol, liquid level adjustment	BZ		symbol, daytime running light
AN		symbol, EK power take-off	BF		symbol, automatic snow chain	CA		symbol, trailer axle lift 1
AP		symbol, split shaft power take-off	BG		symbol, platform locked	CB		symbol, winch
AQ		symbol, ED1 power take-off	BH		symbol, plough locked			
AR		symbol, ED2 power take-off	BJ		symbol, plough in floating position			
CC		symbol, work light, left	CU		symbol, unlocked			
CD		symbol, work light, right	CV		symbol, electrically heated side window			
CE		symbol, work light	CX		symbol, fifth wheel unlocked			
CF		symbol, spotlamp	CY		symbol, battery saving mode			
CG		symbol, temperature warning	CZ		symbol, fifth wheel locked			
CH	OFF	symbol, switched off	DA		symbol, low fuel level warning, heater			
CJ	ON	symbol, switched on	DB		symbol, disengaging bus stop brake			
CK	EXT	symbol, external equipment permitted	DC		symbol, door alarm			
CL		symbol, fifth wheel vertical adjustment	DD		symbol, EL power take-off			
CM		symbol, fifth wheel horizontal adjustment	DE		symbol, open door			
CN		symbol, underrun protection lowered	DF		symbol, warning			
CP		symbol, underrun protection raised	DG		symbol, floor heating			
CQ		symbol, speed limiter	DH		Symbol, dual battery system			
CR		symbol, electrically heated mirror	DJ		Symbol, tag axle lift			
CS		symbol, safety belt passenger	DK		Symbol, load transfer			
CT		symbol, locked						